

Report and Recommendations for Balancing Elementary Attendance Zones

A REPORT TO THE YORK COUNTY SCHOOL BOARD

2017 Elementary Attendance Zones Balancing Committee
SUBMITTED BY CARL L. JAMES, ED.D. | DECEMBER 4, 2017

Contents

Introduction	1
Overview of Plans Developed by ArcBridge Consulting	2
Recommendations for Plans A, B, C and D	3
Attendance Zone Recommendations	3
Capacity and Projected Enrollment	5
Additional Recommendations	7
Summary	7
Appendix A	8
Appendix B	9
Exhibit 1 - Current Elementary School Attendance Zones	13
Exhibit 2 - Proposed Coventry Elementary School Attendance Zone	14
Exhibit 3 - Proposed Grafton Bethel Elementary School Zone	15
Exhibit 4 - Proposed Seaford Elementary School Attendance Zone	16
Exhibit 5 - Proposed Yorktown Elementary School Attendance Zone	17
Exhibit 6 - York County Elementary School Attendance Zones as Proposed	18
Exhibit 7 - York County Elementary School Attendance Zones as Proposed	19

Introduction

The charge of the 2017 Elementary Attendance Zones Balancing Committee, as directed by the School Board and the superintendent, was to review the four plans developed by ArcBridge Consulting for balancing enrollment across 10 elementary schools in the York County School Division and to propose elementary attendance zone recommendations for approval. Attendance zone proposals for a new elementary school were also included. School Board policy states that, as necessary, the Board shall direct the superintendent to appoint a representative advisory committee to review attendance zones and to recommend any changes deemed necessary.

The 2017 Elementary Attendance Zones Balancing Committee, (see Appendix A: 2017 Elementary Attendance Zones Balancing Committee) comprised 20 parent volunteers and nine staff representatives from the York County School Division. Five committee meetings were held between October 5 and November 9, 2017, in the York County School Board Office Building, located at 302 Dare Road, Yorktown, Virginia. Meetings were open to the public.

Decisions and recommendations made by the committee were based upon statistical data, the proposed attendance zones developed by ArcBridge Consulting, York County School Division prepared data profiles, and projected elementary student growth from new residential developments according to the York County Planning Department.

Criteria under consideration for the rezoning process included the following, as used by the consultant and prioritized by the committee:

- Realign school attendance areas so the distribution of students matches the instructional capacity or the building capacity
- Create an attendance zone for a new elementary school
- Review enrollment trends and the effect of approved and proposed residential developments as options are developed
- Avoid multiple attendance zone changes for families
- Maintain a maximum elementary school size of 700 students
- Balance enrollment across 10 existing elementary schools
- Consider the effect of creating or eliminating split feeder patterns
- Evaluate the effect of attendance zones changes on bus routes and travel time
- Avoid separating neighborhoods between zones, to the maximum extent possible
- Avoid significant changes to the current socioeconomic profile of each school
- Minimize movement of military students*
- Set attendance boundary lines along geographic features such as roadways and waterways

*Criteria added by the committee

Overview of Plans Developed by ArcBridge Consulting

ArcBridge Consulting developed four plans for balancing elementary attendance zones using the criteria presented above. These plans were developed through consultation between the consultant and division staff. Following is an overview of each of the plans. The names of each of the neighborhoods involved in the proposed are presented in Exhibit B of this document.

1. Plan A has four proposed changes as follows:
 - A. In Change 1, students move from Magruder Elementary School to Waller Mill Elementary School.
 - B. In Change 2, students move from Yorktown Elementary School to Seaford Elementary School.
 - C. In Change 3, students move from Grafton Bethel Elementary School to Coventry Elementary School.
 - D. In Change 4, students move from Coventry Elementary School to Tabb Elementary School.
 - E. This plan does not include an attendance zone proposal for a new elementary school.
2. Plan B has five proposed changes as follows:
 - A. In Change 1, students move from Magruder Elementary School to Waller Mill Elementary School.
 - B. In Change 2, students move from Yorktown Elementary School to Seaford Elementary School.
 - C. In Change 3, students move from Grafton Bethel Elementary School to Coventry Elementary School.
 - D. In Change 4, students move from Coventry Elementary School to Tabb Elementary School.
 - E. In Change 5, students from Dare Elementary School to Seaford Elementary School.
 - F. This plan does not include an attendance zone proposal for a new elementary school.
3. Plan C has six proposed changes as follows:
 - A. In Change 1, students move from Magruder Elementary School to a new elementary school.
 - B. In Change 2, students from Yorktown Elementary School to a new elementary school.
 - C. In Change 3, students move from Yorktown Elementary School to Seaford Elementary School,
 - D. In Change 4, students move from Grafton Bethel Elementary School to Coventry Elementary School.
 - E. In Change 5, students move from Coventry Elementary School to Tabb Elementary School.
 - F. In Change 6, students move from Dare Elementary School to Seaford Elementary School.
4. Plan D has six proposed changes as follows:
 - A. In Change 1, students move from Magruder Elementary School to a new elementary school.
 - B. In Change 2, students move from Yorktown Elementary School to a new elementary school.
 - C. In Change 3, students move from Yorktown Elementary School to Seaford Elementary School.

- D. In Change 4, students move from Grafton Bethel Elementary School to Coventry Elementary School.
- E. In Change 5, students move from Coventry Elementary School to Tabb Elementary School.
- F. In Change 6, students move from Dare Elementary School to Seaford Elementary School.
- G. The attendance area for students moving to the new school from YES is different in Plan D than in Plan C.

Recommendations for Plans A, B, C and D

Following are the committee recommendations for each of the plans:

- **Plan A.** The committee included modifications to Changes 2 and 3 in its recommendations. Action was not taken on Changes 1 and 4. Please see the attendance zone recommendations below for each elementary school.
- **Plan B.** The committee included modifications to Change 2 and Change 3 in its recommendations. Action was not taken on Changes 1 and 4, 5 and 6. Please see the attendance zone recommendations below for each elementary school.
- **Plan C.** The committee recommends that action on this plan be delayed until more information is known regarding increased enrollment from new residential developments in the Magruder Elementary School, Waller Mill Elementary School and Yorktown Elementary School attendance zones. These changes should be considered by the next Elementary Attendance Zones Balancing Committee.
- **Plan D.** The committee recommends that action on this plan be delayed until more information is known regarding increased enrollment from new residential developments in the Magruder Elementary School, Waller Mill Elementary School and Yorktown Elementary School attendance zones. These changes should be considered by the next Elementary Attendance Zones Balancing Committee.

Attendance Zone Recommendations

The final recommendations of the committee were not limited to the plans developed by the consultant. Based upon the committee's work, recommendations are presented below for each elementary school attendance zone.

1. **Bethel Elementary School, Dare Elementary School, Mount Vernon Elementary School and Tabb Elementary School Attendance Zones.** The committee recommended no adjustments to these attendance zones.
2. **Magruder Elementary School and Waller Mill Elementary School Attendance Zones.** The committee recommends changes for this zone be delayed until more information is known regarding new residential developments and the impact on instructional capacity at Waller Mill Elementary School, Magruder Elementary School and at Yorktown Elementary School. The changes proposed changes to these zones should be reviewed by a future Attendance Zones Balancing Committee.
3. **Coventry Elementary School and Grafton Bethel Elementary School Attendance Zones.** The committee recommends elementary students from the neighborhoods of Byrd Lane, Cain Terrace, York Manor and Commonwealth Green who are assigned to attend Grafton Bethel Elementary School be assigned to Coventry Elementary School beginning with the 2018-19 school year as proposed by the consultant. Fifty-two elementary students resided in these neighborhoods on November 1, 2017.

4. **Seaford Elementary School and Yorktown Elementary School Attendance Zones.** The committee recommends the proposed boundary change between the Seaford Elementary School and the Yorktown Elementary School attendance zones that was created by the consultant be modified to include only the neighborhoods of Yorktown Arch, The Quarters of Yorktown and Wood Towne Quarters. Elementary students who reside in these neighborhoods attend Yorktown Elementary School and would be assigned to Seaford Elementary School beginning with the 2018-19 school year. Fifty-seven elementary students resided in these neighborhoods on November 1, 2017.

Table 1 shows the neighborhoods and associated streets that will be moved from the Yorktown Elementary School attendance zone to the Seaford Elementary School attendance zone if the proposed recommendations are approved by the School Board.

Table 1

Proposed Movement of Neighborhoods and Streets from the Yorktown Elementary School Attendance Zone to the Seaford Elementary School Attendance Zone	
Wood Towne Quarters	The Quarters of Yorktown and Yorktown Arch
Briarwood Place	Abercrombie Street
Crepe Myrtle Drive	Ellis Drive
Crestwood Court	Generals Way
Cypress Crossing	Grant Court
Elmhurst Drive	Ross Street
Englewood Court	Stansted Street
Farmstead Place	Sullivan Street
Hawthorne Drive	
Manchester Way	

Table 2 indicates the same information for the movement of neighborhoods from the Grafton Bethel Elementary School attendance zone to the Coventry Elementary School attendance zone.

Table 2

Proposed Movement of Neighborhoods and Streets from the Grafton Bethel Elementary School Attendance Zone to the Coventry Elementary School Attendance Zone	
Byrd Lane	Commonwealth Green
Byrd Lane	Ambush Street
Cain Terrace	Commonwealth Drive
Oak Street	Crossroads Loop
Pine Street	Democracy Street
Trinity Drive	Legacy Way
York Manor	Preservation Way
Don Juan Circle	Rebellion Way
Shamrock Avenue	Republic Loop
Trivalon Court	

A map of the current elementary attendance zones is presented in Exhibit 1 of this document. Maps of the proposed attendance zone changes for Coventry, Grafton Bethel, Seaford and Yorktown elementary schools are presented in Exhibits 2, 3,4, 5. Exhibits 6 and 7 contain division maps with proposed elementary attendance zone changes.

Capacity and Projected Enrollment

During its deliberations, the committee discussed the impact of the proposed recommendation on capacity and enrollment at Coventry Elementary School, Grafton Bethel Elementary School, Seaford Elementary School and Yorktown Elementary School. Table 3 shows November 1, 2017 capacity, enrollment, staffing and average class size data for these schools. Projected enrollment, staffing and average class size data for the 2018-19 school year are also presented.

The projected enrollment was calculated by using the cohort survival methodology. Grade level cohorts of students were advanced to the next grade level with kindergarten enrollment remaining the same. The number of students by grade level who were subject to an attendance zone change were subtracted from their currently assigned schools by grade level and added to the school they will be assigned for the 2018-19 school year. A projected staffing allocation was assigned to each grade level in these schools to ensure that the average class size remained within the division average class size ratios of 20 and 25 for grade K-2 and 3-5, respectively.

During this process, the total projected enrollment was not to exceed the instructional capacity for each school. Capacity data for each is shown for each school in Table 3.

Table 3

Projected Enrollment, Staffing and Average Class Size Data							
Schools		SY 2017-18			SY 2018-19 (Projected)		
	GRADE	ENROLLMENT	STAFFING	AVERAGE CLASS SIZE	ENROLLMENT	STAFFING	AVERAGE CLASS SIZE
COVENTRY ELEMENTARY SCHOOL	K	87	4	21.75	93	5	18.60
Building Capacity - 708 Instructional Capacity - 630	1st	79	4	19.75	93	5	18.60
	2nd	106	5	21.20	85	4	21.25
	K - 2nd	272	13	20.92	271	14	19.36
	3rd	86	4	21.50	123	5	24.60
	4th	110	4	27.50	95	4	23.75
	5th	103	4	25.75	121	5	24.20
	3rd - 5th	299	12	24.92	339	14	24.21
	TOTAL	571	25	22.84	610	28	21.79
GRAFTON BETHEL ELEMENTARY SCHOOL	K	88	4	22.00	82	4	20.50
Building Capacity - 703 Instructional Capacity - 630	1st	113	5	22.60	82	4	20.50
	2nd	103	5	20.60	107	5	21.40
	K - 2nd	304	14	21.71	271	13	19.36
	3rd	102	4	25.50	86	4	21.50
	4th	110	5	22.00	93	4	23.25
	5th	121	5	24.20	99	4	24.75
	3rd - 5th	333	14	23.79	278	12	23.17
	TOTAL	637	28	22.75	549	25	21.12
SEAFORD ELEMENTARY SCHOOL	K	72	4	18.00	83	4	20.75
Building Capacity - 656 Instructional Capacity - 540	1st	78	4	19.50	83	4	20.75
	2nd	76	4	19.00	85	5	17.00
	K - 2nd	226	12	18.83	251	13	19.31
	3rd	63	3	21.00	86	4	21.50
	4th	83	4	20.75	72	3	24.00
	5th	76	3	25.33	98	4	24.50
	3rd - 5th	222	10	22.20	256	11	23.27
	TOTAL	448	22	20.36	507	24	21.13
YORKTOWN ELEMENTARY SCHOOL	K	107	6	17.83	96	5	19.20
Building Capacity - 734 Instructional Capacity - 630	1st	107	6	17.83	96	5	19.20
	2nd	119	6	19.83	100	5	20.00
	K - 2nd	333	18	18.50	292	15	19.47
	3rd	102	5	20.40	109	5	21.80
	4th	110	5	22.00	93	4	23.25
	5th	120	5	24.00	95	4	23.75
	3rd-5th	332	15	22.14	297	13	22.85
	TOTAL	665	33	20.15	589	28	21.04

Additional Recommendations

- **Rising Fifth Graders:** The committee recommended rising fifth graders and their siblings who attend Grafton Bethel Elementary School and Yorktown Elementary School and are subject to an attendance zone change be allowed to attend their current school for the 2018-19 school year. Parents must provide transportation if employing this option under this recommendation.
- **New Elementary School:** The committee recommended the new elementary school be constructed as soon as reasonably possible. The attendance zone for this school should be confirmed at the time of the groundbreaking for this facility.
- **Bruton Area Bus Parking:** The committee recommends a new bus parking area in the Bruton zone be created to provide additional parking at Magruder Elementary School.
- **Additional Classrooms:** The committee recommended additional classrooms be added to Seaford Elementary School and to Waller Mill Elementary School.
- **Capacity and Enrollment:** The committee recommended capacity and enrollment at the middle school level be reviewed given the number of new residential developments throughout the county. Capacity at Queens Lake Middle School should be the primary focus of the review.
- **K-8 School:** The committee recommended that the possibility of constructing a K-8 school in the upper county to accommodate increasing enrollment should be explored as an option. (REWORD: The committee recommends exploring the construction of a K-8 school in the upper county to accommodate increasing enrollment.)
- **Future Attendance Zone Committee:** The next edition of the Attendance Zone Balancing Committee should review the elimination of multiple attendance zones that exist east of Big Bethel Road to the Hampton city line.

Summary

The recommendations of the 2017 Elementary Attendance Balancing Committee are based on the review of multiple data points, including the ArcBridge Consulting proposed plans, York County School Division data and York County Planning Department data. The committee did not recommend implementing all of the proposed changes from the consultant as the timing of the completion of new residential developments and the impact of these developments on elementary attendance zone is unknown, especially for Magruder, Waller Mill and Yorktown elementary schools. Even with the approval of the proposed recommendations, classrooms space for increasing enrollment at some elementary schools is still an area of concern. The committee urges the School Board to continue to take the steps necessary to address increasing enrollment.

Appendix A

2017 Elementary Attendance Zones Balancing Committee

COMMITTEE MEMBERS	AFFILIATION
Anderson, John	Dare Elementary School
Butler, Ed.D., Aaron	School Board Office
Carl, John	Coventry Elementary School
Cook, Robert	Coventry Elementary School
Crosby, Duane	Seaford Elementary School
Deckard, Tanya	School Board Office
Denny, Kelly	Yorktown Elementary School
Fisher, Kathy	Yorktown Elementary School
Freeman, Carrie	Tabb Elementary School
Goodwin, Jennifer	Waller Mill Elementary School
Graves, James	Waller Mill Elementary School
Harned, Margaret	Magruder Elementary School
Head, Christina	Seaford Elementary School
Huptich, Beatriz	Waller Mill Elementary School
James, Ed.D, Carl	School Board Office
Jepson, Robert	Bethel Manor Elementary School
Kirk, Mark	Magruder Elementary School
Lucas, Allison or Andy	Dare Elementary School
Matthews, Erin	Mount Vernon Elementary School
McQuigg, Georgia	School Board Office
Oliver, Vaughnery	Mount Vernon Elementary School
Ruffieux, Lisa	Grafton Bethel Elementary School
Sawyer, Carrie	Yorktown Elementary School
Scaturico, Cynthia	Seaford Elementary School
Sorensen, Ebru	Grafton Bethel Elementary School
Stalsworth, Lisa	Tabb Elementary School
Washburn, Tiffany	Bethel Manor Elementary School
Woods, Roscoe	Yorktown Elementary School

Appendix B

Proposed Movement of Neighborhoods to New Attendance Zones

PLAN A

A. Change 1 - Proposed movement of neighborhoods from Magruder Elementary School to Waller Mill Elementary School

- Carver Gardens
- Callahan Village
- Country Club Estates
- Country Club Apartments
- Washington Ridge
- Williamsburg Bluffs

B. Change 2 - Proposed movement of neighborhoods from Yorktown Elementary School to Seaford Elementary School

- Marlbank Heights
- Nelsons Grant
- Settlers Crossing
- The Quarters of Yorktown
- White Oak
- Wood Towne Quarters
- Yorktown Arch

C. Change 3 - Proposed movement of neighborhoods from Grafton Bethel Elementary School to Coventry Elementary School

- Byrd Lane
- Cain Terrace
- Commonwealth Green
- The Commonwealth of York
- York Manor

D. Change 4 - Proposed movement of neighborhoods from Coventry Elementary School to Tabb Elementary School.

- The Gables
- Pines of York

PLAN B

A. Change 1 - Proposed movement of neighborhoods from Magruder Elementary School to Waller Mill Elementary School

- Creekside Landing
- Queens Lake
- Royal Grant

B. Change 2 - Proposed movement of neighborhoods from Yorktown Elementary School to Seaford Elementary School

- Battle Park
- Marlbank Heights
- Nelsons Grant
- Nelsons Heights
- Settlers Crossing
- The Quarters of Yorktown
- White Oak
- Wood Towne Quarters
- Yorktown Arch

PLAN B (continued)

C. Change 3 - Proposed movement of neighborhoods from Grafton Bethel Elementary School to Coventry Elementary School

- Byrd Lane
- Cain Terrace
- Commonwealth Green
- Commonwealth of York
- York Manor

D. Change 4 - Proposed movement of neighborhoods from Coventry Elementary School to Tabb Elementary School

- The Gables
- Pines of York

E. Change 5 - Proposed movement of neighborhoods from Dare Elementary School to Seaford Elementary School

- Barcroft
- Scotch Toms Woods

PLAN C

A. Change 1 - Proposed movement of neighborhoods from Magruder Elementary School to a new elementary school.

- Callahan Village
- Country Club Estates
- Country Club Apartments
- Marquis South Pod
- Carver Gardens
- Washington Ridge
- Williamsburg Bluffs

B. Change 2 - Proposed movement of neighborhoods from Yorktown Elementary School to a new elementary school

- Naval Weapons Station

C. Change 3 - Proposed movement of neighborhoods from Yorktown Elementary School to Seaford Elementary School

- Battle Park
- Marlbank Heights
- Nelsons Grant
- Nelsons Heights
- Settlers Crossing
- The Quarters of Yorktown
- White Oak
- Wood Towne Quarters
- Yorktown Arc

PLAN C (continued)

D. Change 4 - Proposed movement of neighborhoods from Grafton Bethel Elementary School to Coventry Elementary School

- Byrd Lane
- Cain Terrace
- Commonwealth Green
- The Commonwealth of York
- York Manor

E. Change 5 - Proposed movement of neighborhoods from Coventry Elementary School to Tabb Elementary School.

- The Gables
- Pines of York

F. Change 6 - Proposed movement of neighborhoods from Dare Elementary School to Seaford Elementary School.

- Barcroft
- Scotch Toms Woods

PLAN D

A. Change 1 - Proposed movement of neighborhoods from Magruder Elementary School to a new elementary school.

- Callahan Village
- Country Club Estates
- Country Club Apartments
- Marquis South Pod
- Carver Gardens
- Washington Ridge
- Williamsburg Bluffs

B. Change 2 - Proposed movement of neighborhoods from Yorktown Elementary School to a new elementary school

- Carter Estates
- Cheyenne Hills
- Coburn Court
- Creekside Apartments
- Boundary Homes
- Brownville Terrace
- Endview Woods
- Grand Oaks
- Mays Hollow
- Magnolia PRK
- Naval Weapons Station
- Sonshine Acres
- Summers Crossing
- Snowden
- Williams Terrace
- Yorktown Trace

PLAN D (continued)

C. Change 3 - Proposed movement of neighborhoods from Yorktown Elementary School to Seaford Elementary School

- Battle Park
- Marlbank Heights
- Nelsons Grant
- Nelsons Heights
- Settlers Crossing
- The Quarters of Yorktown
- White Oak
- Wood Towne Quarters
- Yorktown Arch

D. Change 4 - Proposed movement of neighborhoods from Grafton Bethel Elementary School to Coventry Elementary School

- Byrd Lane
- Cain Terrace
- Commonwealth Green
- The Commonwealth of York
- York Manor

E. Change 5 - Proposed movement of neighborhoods from Coventry Elementary School to Tabb Elementary School.

- The Gables
- Pines of York

F. Change 6 - Proposed movement of neighborhoods from Dare Elementary School to Seaford Elementary School.

- Barcroft
- Scotch Toms Woods

Exhibit 1 - Current Elementary School Attendance Zones

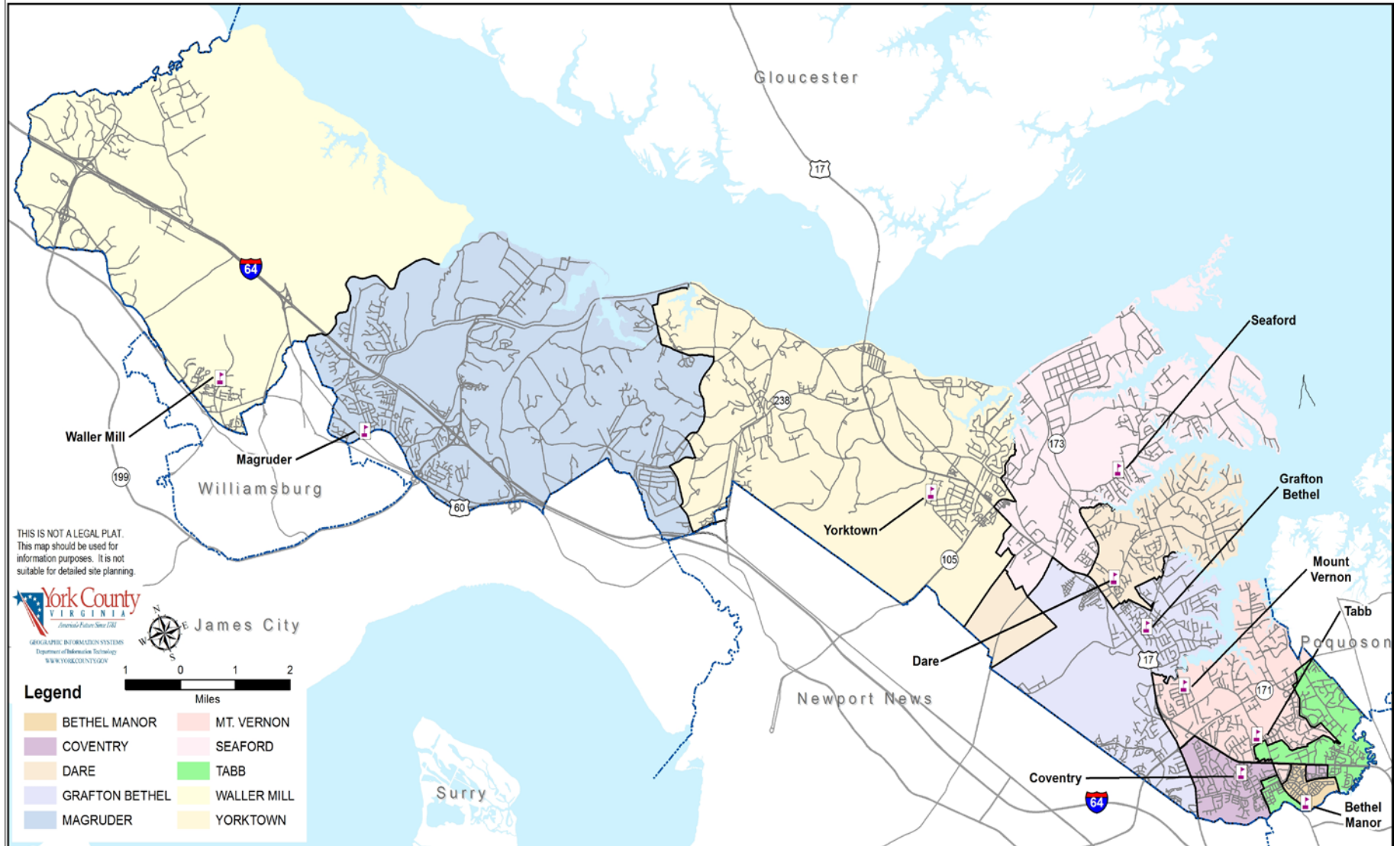


Exhibit 2 - Proposed Coventry Elementary School Attendance Zone



Exhibit 3 - Proposed Grafton Bethel Elementary School Zone

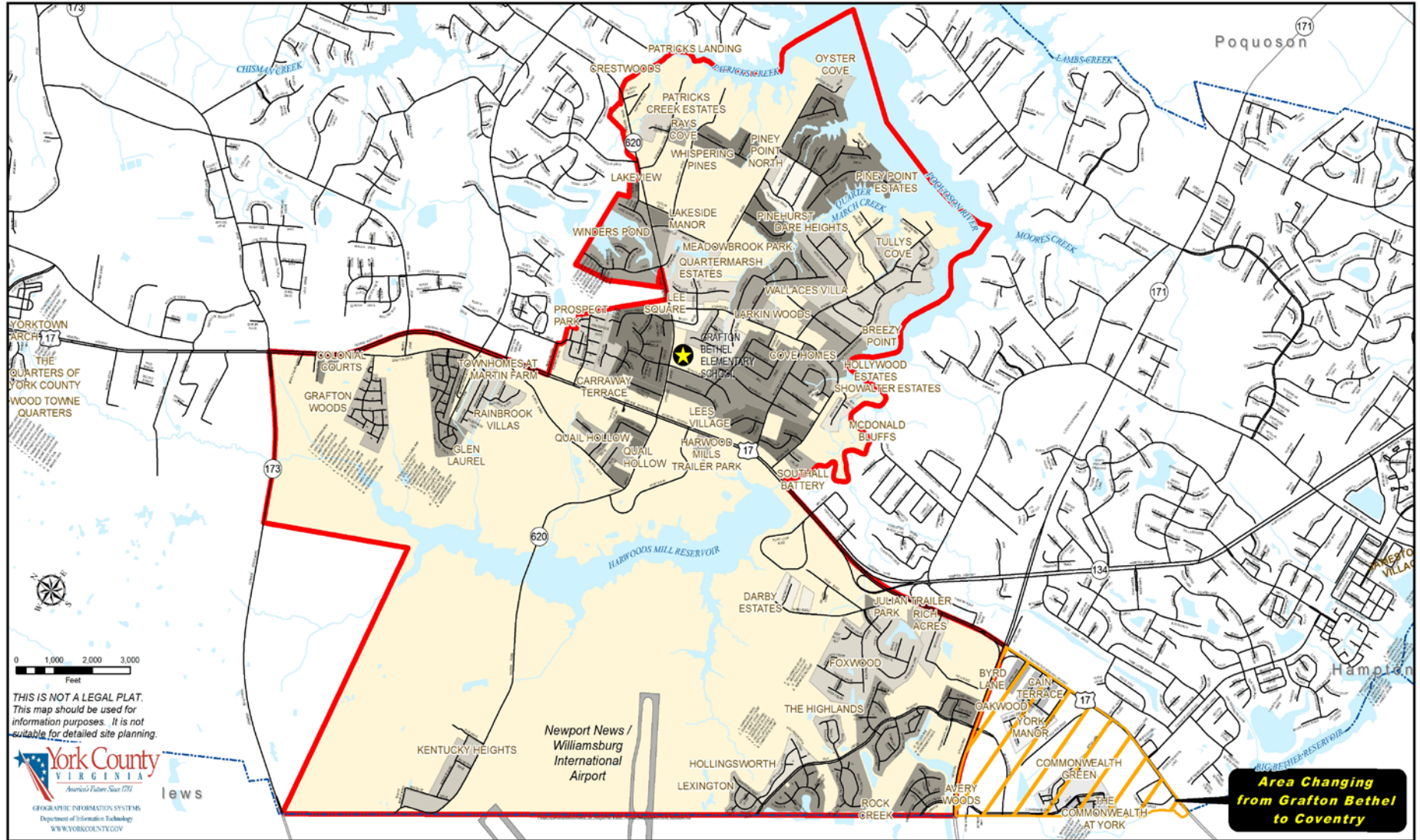


Exhibit 4 - Proposed Seaford Elementary School Attendance Zone



Exhibit 5 - Proposed Yorktown Elementary School Attendance Zone

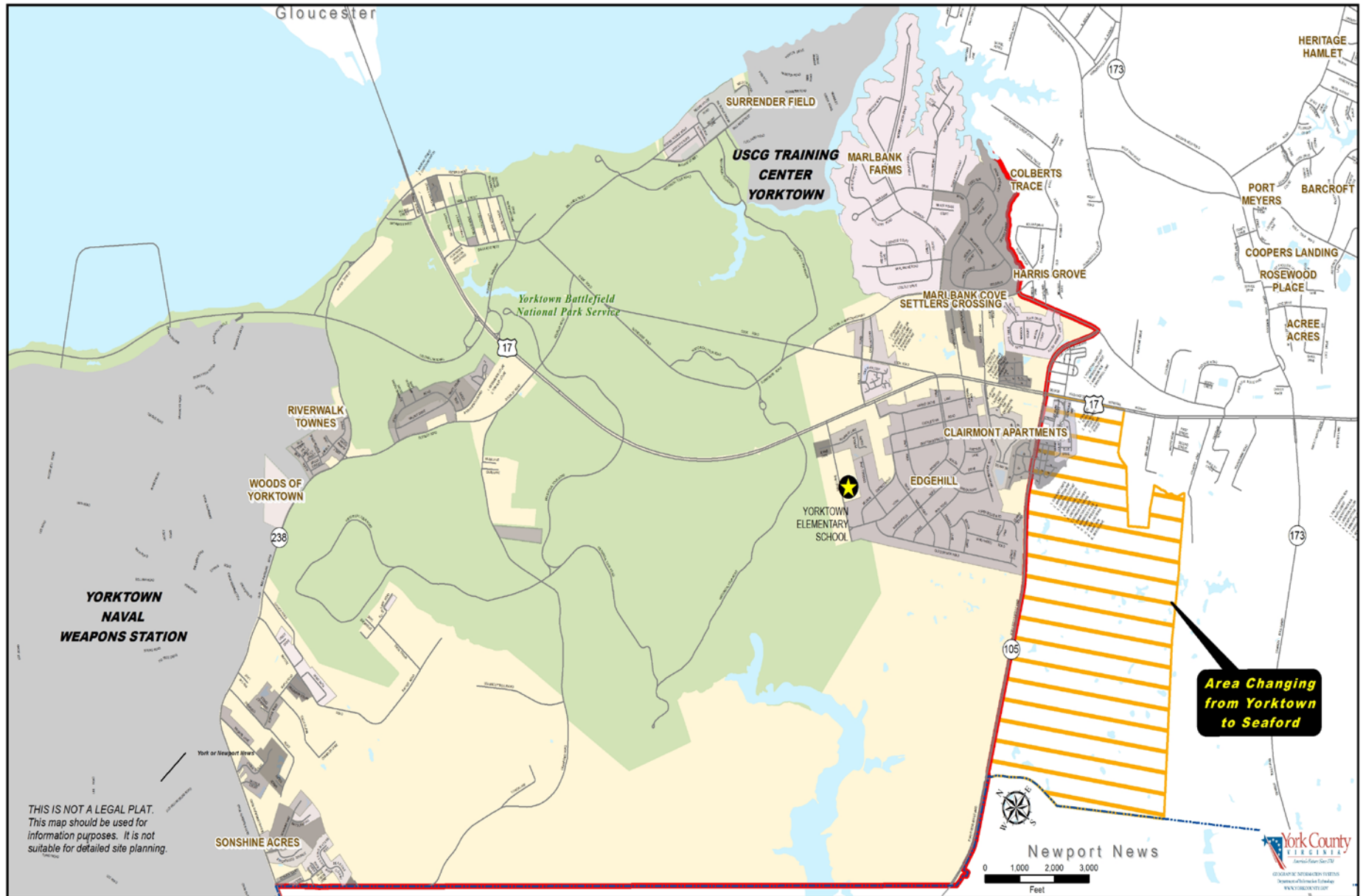


Exhibit 6 - York County Elementary School Attendance Zones as Proposed

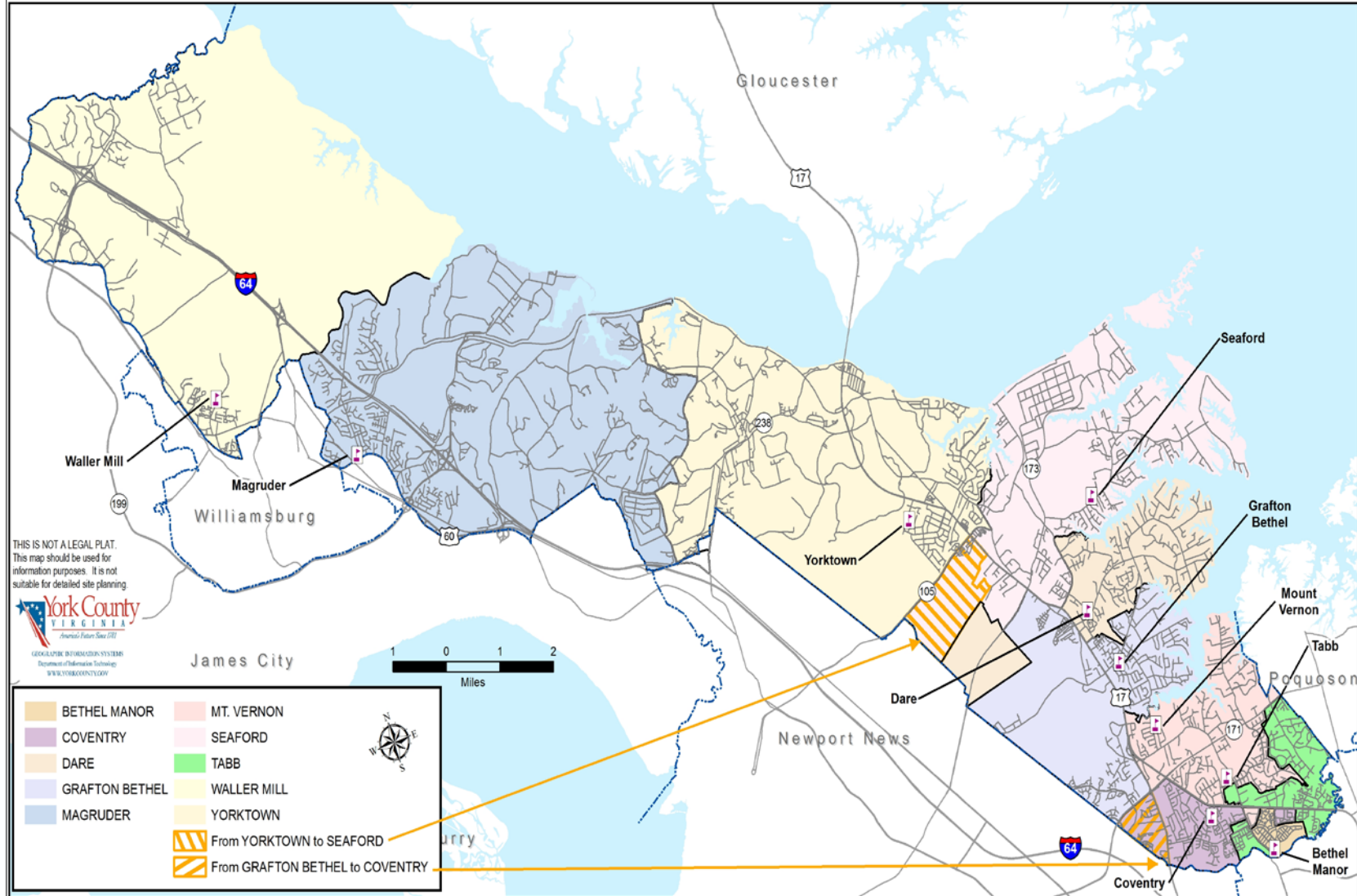


Exhibit 7 - York County Elementary School Attendance Zones as Proposed

